

# Aware, Alert, Ahead & Alive

*How To Do Your Job Effectively  
When Things Are Trying To Kill You*

The overall rate of  
injuries and illnesses  
among EMS workers is  
**6X higher** than  
the nat'l average.

The rate of  
*transportation injuries*  
is **30 times higher**  
than the U.S. average.

*Violence -related*

injuries: 22 times

higher in EMS

than national average.

*Assault fatality* rate  
among *EMS providers* is  
**7x higher** than for  
health care workers.



**emsvillage.com**

Your Professional Social Networking And Resource Site For EMS Professionals

[HOME](#) [MY TOOLS](#) [FEATURES](#) [SOCIAL](#) [ARTICLES](#) [NEWS](#) [FORUMS](#) [MARKETPLACE](#) [EDUCATION](#)

# Why Are Firefighters & EMS Facing Such Hostility?

**Author:** Jerry Smith, [The EmergencyGrapevine.com](#)

Firefighters and EMS personnel around the world continue to be attacked and assaulted with deadly force.

GOAL

To be more

*SAFE*

and

*EFFECTIVE*

Responders





# Situational Awareness



## Defined as

- "Knowing what is going on so you can figure out what to do."

## And

- "What you need to know to not be surprised."



Information does NOT  
DEMAND your attention

You MUST seek / scan  
for critical clues & cues





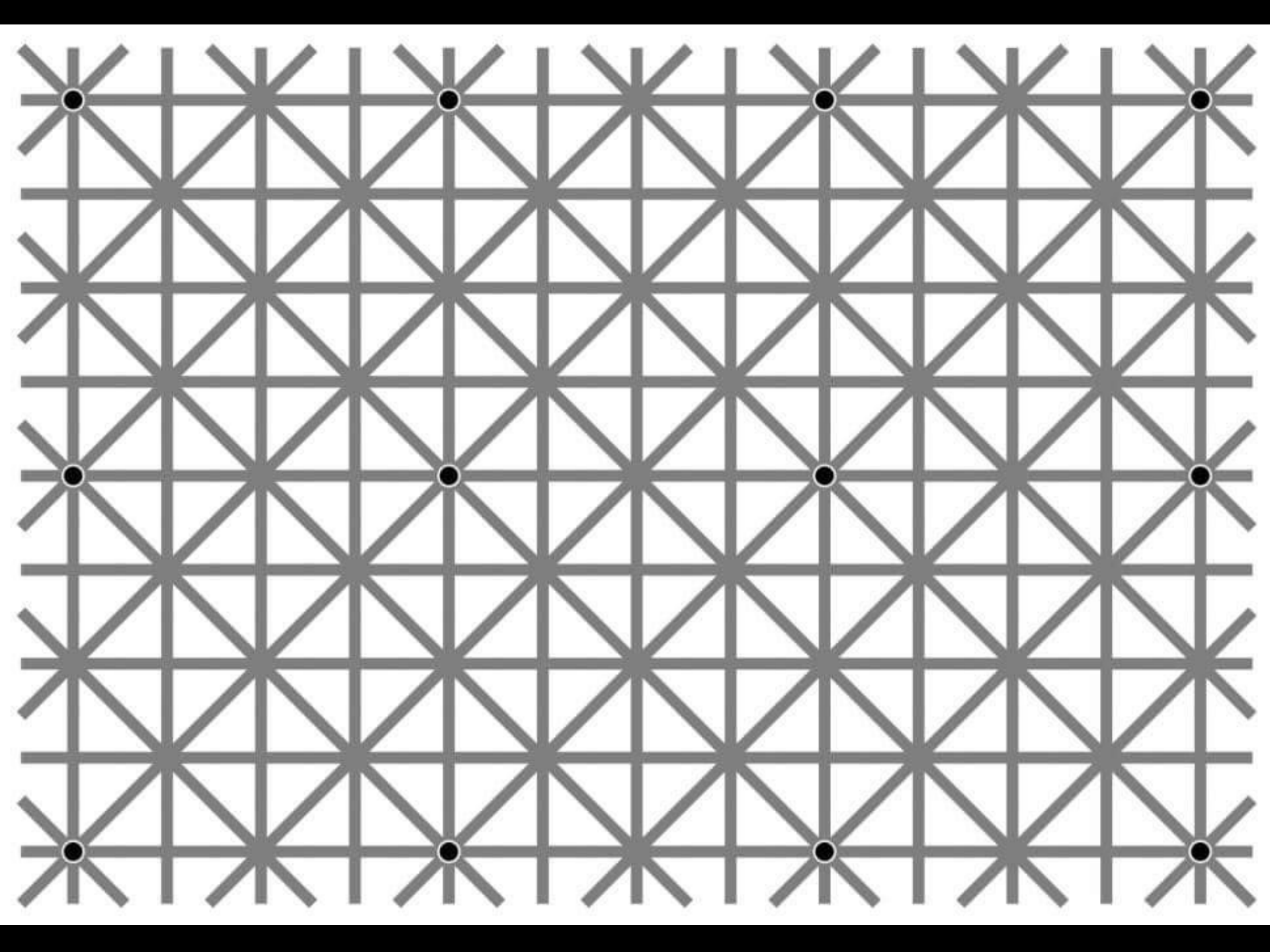


**WATCH OUT!**

**It's Right There!**



**Tunnel Vision**





# Attention Triggers

Sudden flash

Sudden loud sound

Sudden face

Sudden large / close object

Others looking / pointing

# Scan Triggers

Change in location (including arrival)

Change in task (including receiving assignment)

Change in resources (tools, water, crew, etc.)

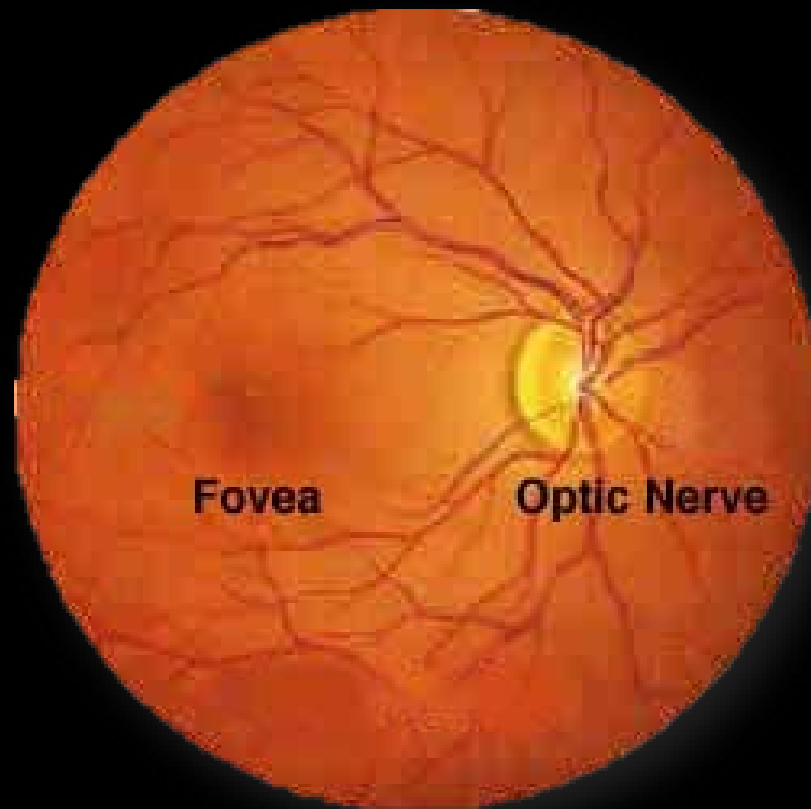
Change in conditions (or conditions do not change)

**YOU MUST ACTIVELY...**

**PERCEIVE, PROCESS, PREDICT**

**DECIDE, TAKE ACTION, COMMUNICATE & COORD.**

K F L M V T U I P Z G B A W Q X





# Cooper's Colors

<b>WHITE</b>	Unprepared and unready to take action. If you are attacked in White you will probably die unless your adversary is totally inept.
<b>YELLOW</b>	Prepared, alert and relaxed. Good situational awareness.
<b>ORANGE</b>	Specific alert to probably danger. Ready to take action.
<b>RED</b>	Action Mode. Totally committed to the emergency at hand.
<b>BLACK</b>	System overload. Breakdown of physical & mental Performance.



**WATCH OUT!**

# Condition White?



# Hazard Zones

## Cold

- *Gather Information on hazard & protection*

## Warm

- *Observe for immediate hazard & protection*

## Hot

- *Actively engaged with stuff trying to kill you*



# RED FLAGS

may be large and obvious





Nuclear Power Plant

Spider Farm

# RED FLAGS

may be small and  
inconspicuous





**WATCH OUT!**



# Size Up

**U**nit

**C**onditions

**A**ctions

**N**eeds



# Predict the Situation

It is going in this direction

At this rate

With these results if we don't intervene

# RED FLAGS

may crop up a little at a time



# RED FLAGS

- *Uncooperative*
- *Parroting*
- *Drugs/Alcohol*
- *Disrespect*
- *Intimidation*
- *Threats (no opt)*
- *Hx of Violence*
- *Touching*
- *Trapped*
- *Restraint*
- *Bad Bystanders*
- *Gut Feeling*





# Crew Resource Management

**If You See Something,  
Say Something**

**If you are in charge,  
LISTEN!**



**WATCH OUT!**

# Man bites paramedic in the Loop



**CBS Chicago**

[Buy Tickets](#) [Order Food](#) [More](#) ▼

[LOG IN](#) |



## **Police: Man Attacked Paramedics Who Tried To Help Him**

July 13, 2011 12:28 PM




# Motorist jailed after attacking paramedics

Story

Comments

Print  Font Size:  

 Recommend  30

 Tweet  2

 +1  0

*Pin it*  0

 Share  2



Sweney

Posted: Wednesday, March 11, 2015 6:00 am

Millard K. Ives [millardives@dailycommercial.com](mailto:millardives@dailycommercial.com) |

 0 comments

SUMTERVILLE — A Sumter County motorist cursed at a driver he rear-ended as he ran from a crash, only to be brought back to the scene, where he attacked paramedics while trying to run off

## Dickson paramedic attacked by two men

Posted: Dec 05, 2014 4:52 PM EST

Updated: Dec 19, 2014 4:52 PM EST

DICKSON, TN (WSMV) - Investigators in Dickson are searching for two men who attacked a paramedic.

### MORE



Police said the EMS worker responded to a call for help when he was jumped by two men while he was at work.

"I believe he was of the mindset that he was going to help someone who was having trouble breathing," said Det. Josh Ethridge with the Dickson Police Department.

The paramedic didn't realize he was about to become the victim of a crime.

"The last thing he ever would've expected, I'm sure, would to be attacked by two people," Ethridge said.





## Start Your Own Foundation

Create a Private Foundation Now With Our Help. Free FAQ Booklet!



## Paramedic attacked while treating patient

Posted: Mon 8:38 AM, Oct 06, 2014

By: Matt McGovern [Email](#)

[Home](#) / [News](#) / [Headlines List](#) / [Article](#)

SAN ANTONIO, TEXAS (WOAI) - A patient being treated inside an ambulance turned on a paramedic and attacked her.

It happened early Monday morning as the patient was being taken to a [hospital](#).

Police say the patient began to choke the paramedic.

The EMT [driving](#) the ambulance stopped and the patient jumped out and



# Car Crash Patient Attacked Philly Paramedics, Union Says



Posted: Jun 17, 2013 1:30 PM EDT  
Updated: Jul 01, 2013 1:31 PM EDT

PHILADELPHIA - Two paramedics were injured Monday morning when a patient apparently attacked them and tried to steal a fire engine.

## Fielding more calls, city EMTs often attacked, injured The Boston Globe




By David Abel, Globe Staff | August 29, 2007

One had his nose broken four times. Another was attacked with cinder blocks dropped off the roof of a housing project. Others have been stabbed with drug-filled syringes, chased by dogs, and strafed by gunfire after arriving at crime scenes before the shooting stopped.

# Suspect is jailed in paramedic's attack

Story

Comments

Print  Font Size:  

 Recommend 

 Tweet

 Share 

Posted: Wednesday, May 4, 2005 12:00 am | Updated: 5:51 pm, Thu Oct 3, 2013.



Weddle

RHETT MORGAN World Staff Writer |  0 comments

**The police chief says the man is an addict who had demanded drugs from paramedics previously.**

OOLOGAH -- A man who was jailed Tuesday after he allegedly stalked and stabbed an Oologah paramedic the day before has a history of demanding drugs from and making threats to emergency personnel, a police chief said.



In the past 12 months, Allen Dallas Weddle, 45, who was arrested on allegations that he stabbed Emily O'Banion, has requested transport 18 times from the Oologah-Talala Emergency Medical Services District, Oologah Police Chief Novale Thompson said.

The calls centered on Weddle's attempts to satisfy what Thompson called a prescription-drug addiction.



### Top Stories

-  No Child Left Hungry program a success
-  Kroger contract dispute continues
-  Prosecutors presenting Wesley's case to grand jury
-  Man cited after ATV, UTV crash
-  Lawsuit filed against local contractor

 Like  96  Tweet  2  8+1  1 

## Update: Revived man who attacked paramed... text size A A A



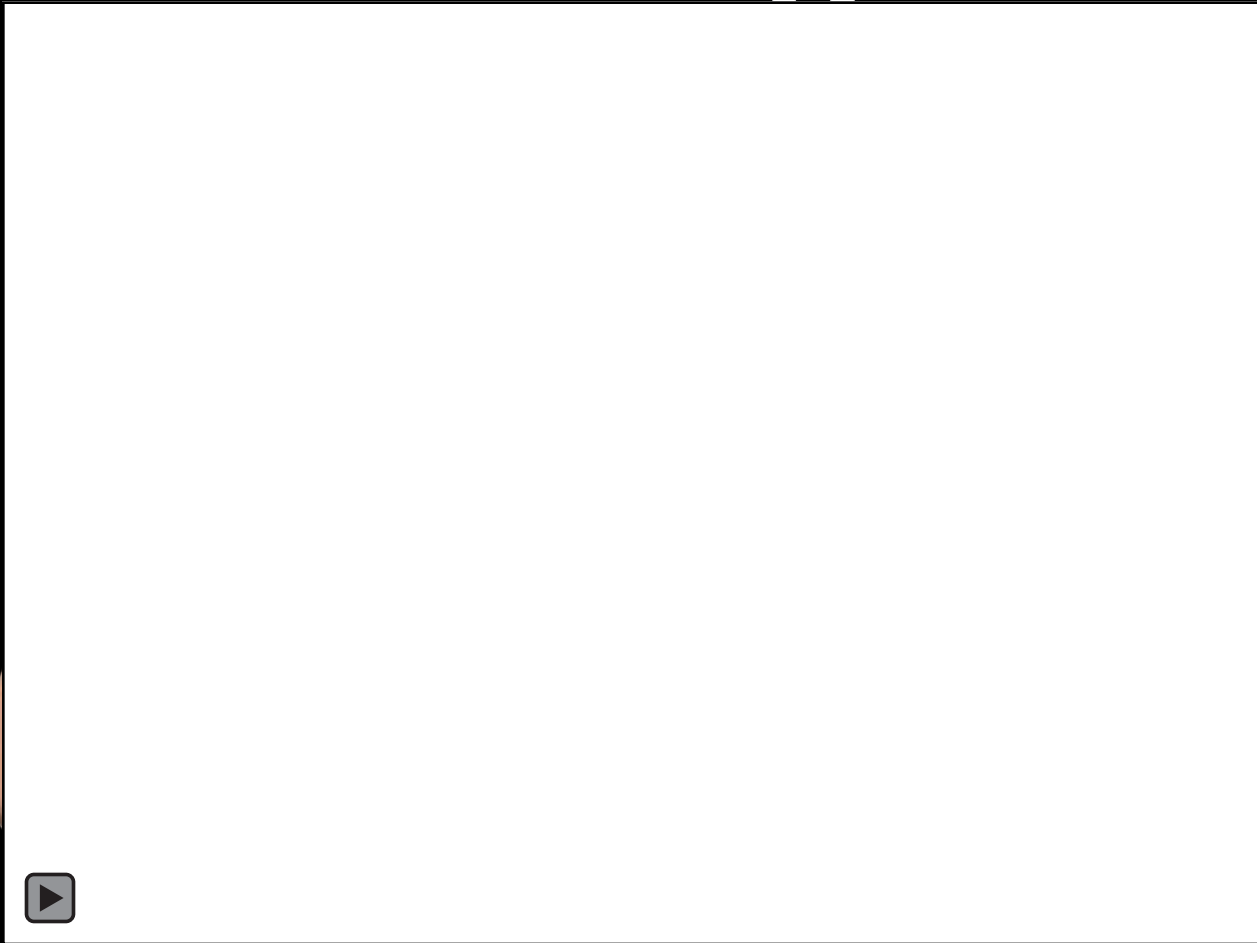
Updated: Wednesday, September 3 2014, 06:17 PM EDT

WTOV9.com

BROOKE COUNTY, W.Va. - After a manhunt that lasted more than 2 hours, police have found a man who allegedly attacked paramedics who had just revived him from an overdose, then fled Wednesday afternoon on the West Virginia side of the Ohio River



**Don't Train Until You  
Get It Right...**









Join Me On Twitter:

*@romduck*

*@RescueDigest*



Contact Me:

*www.RomDuck.com*



Resources:

*www.bit.ly/SAforU*

*www.RescueDigest.com*